



**Harper
Macleod LLP**
Estate Agents & Solicitors



8A Balvenie Street, Dufftown, AB55 4AB

Offers over £210,000

Five bedroom maisonette situated in the heart of Dufftown, home to several famous Distilleries and the central point for the Speyside Whisky Trail. The accommodation comprises entrance vestibule and hallway, lounge, dining room, kitchen, utility/rear vestibule, five bedrooms (one en-suite), shower room and study. The property further benefits from double glazing, biomass boiler, rear garden, garage and shared off-street parking.

Harper Macleod LLP, The Old Station Maisondieu Road, Elgin, Moray, IV30 1RH

Tel: 01343 555 150 Email: propertyshop.elgin@harpermacleod.co.uk <https://www.estateagencymoray.co.uk>

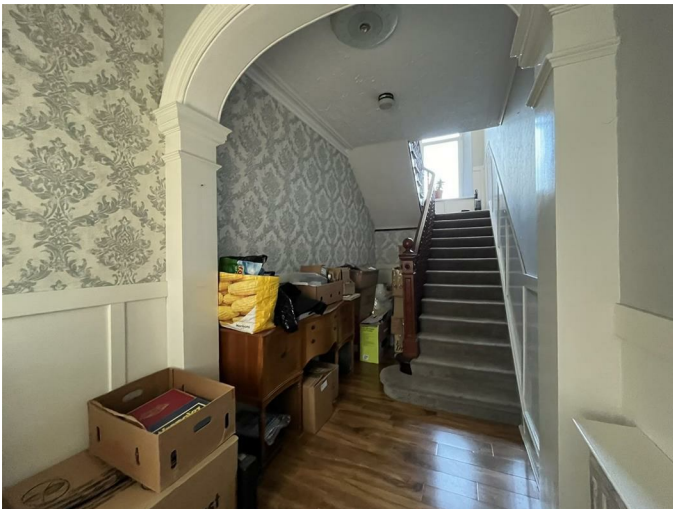
VESTIBULE

6'9" x 4'8" (2.06m x 1.44m)



Wooden and glazed door; ceiling light fitting; original tile flooring; built-in cupboard housing electric consumer units; wooden and glazed door to hallway.

HALLWAY



Polished oak flooring; ceiling light fitting; staircase to first floor.

STAIRCASE & FIRST FLOOR LANDING

15'1" x 6'11" (4.62m x 2.12m)



Window to rear at half-landing; window to front; ceiling light fitting; fitted carpet.

LOUNGE

19'5" x 15'5" (5.94m x 4.72m)



Window to front; ceiling light fitting; two wall light fittings; fitted carpet; two recessed alcoves with shelving; feature fireplace with log-burner.

DINING ROOM

16'0" x 13'8" (4.88m x 4.19m)



Window to front; ceiling light fitting; two wall light fittings; fitted carpet; feature fireplace with open fire; built-in storage cupboard.

KITCHEN

13'7" x 12'9" (4.15m x 3.91m)



Window to rear; ceiling strip light; tile effect flooring; fitted kitchen in white; sink and drainer; integrated fridge; integrated freezer; built-in oven and grill; electric hob and hood; plumbing and space for dishwasher; door to rear vestibule.

UTILITY / REAR VESTIBULE

7'8" x 4'10" (2.35m x 1.48m)

Window to rear; ceiling light fitting; tile flooring; plumbing and space for washing machine and tumble dryer; UPVC and glazed door leads out to rear.

BEDROOM 1

13'11" x 12'2" (4.25m x 3.73m)



Window to rear; ceiling light fitting; fitted carpet; door to Jack & Jill shower room.

JACK & JILL SHOWER ROOM

9'0" x 6'8.5" (2.76m x 2.09m)



Window to rear; ceiling light fitting; double walk-in shower enclosure with Mira electric shower; vanity mounted sink with cabinets; WC.

STAIRCASE & SECOND FLOOR LANDING



Velux window to rear at half-landing; ceiling light fitting; fitted carpet.

SHOWER ROOM

6'8" x 6'2" (2.05m x 1.90m)



Velux window to rear; polished oak flooring; walk-in shower enclosure with Mira electric shower; wall mounted sink; WC.

BEDROOM 5

16'8" x 11'7" (5.09m x 3.55m)

Window to rear; ceiling light fitting; fitted carpet.

BEDROOM 2

13'11" x 12'0" (4.26m x 3.66m)



Bay window to front; ceiling light fitting; fitted carpet.

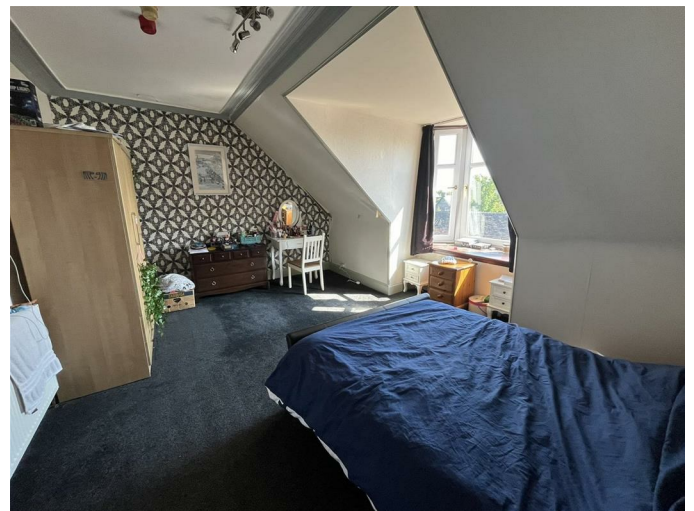
STUDY

10'4" x 9'10" (3.16m x 3.00m)

Window to front; wall light fitting; fitted carpet; base units with worktop; built-in cupboard.

BEDROOM 3

13'10" x 11'2" (4.23m x 3.42m)



Bay window to front; ceiling light fitting; fitted carpet.

BEDROOM 4

12'8" x 11'7" (3.88m x 3.55m)



Window to rear; ceiling light fitting; fitted carpet.

GARAGE



Up and over door; power and light.

OUTSIDE



There is a shared off-street parking area to the rear of the property and leading to the garage. An adjoining timber store provides access to the rear garden and houses the biomass boiler. The fully enclosed rear garden is laid to a mix of paving and artificial grass with mature shrubs and trees; pergola arch; arbour; steps lead up to an upper level with timber garden room; wooden shed.

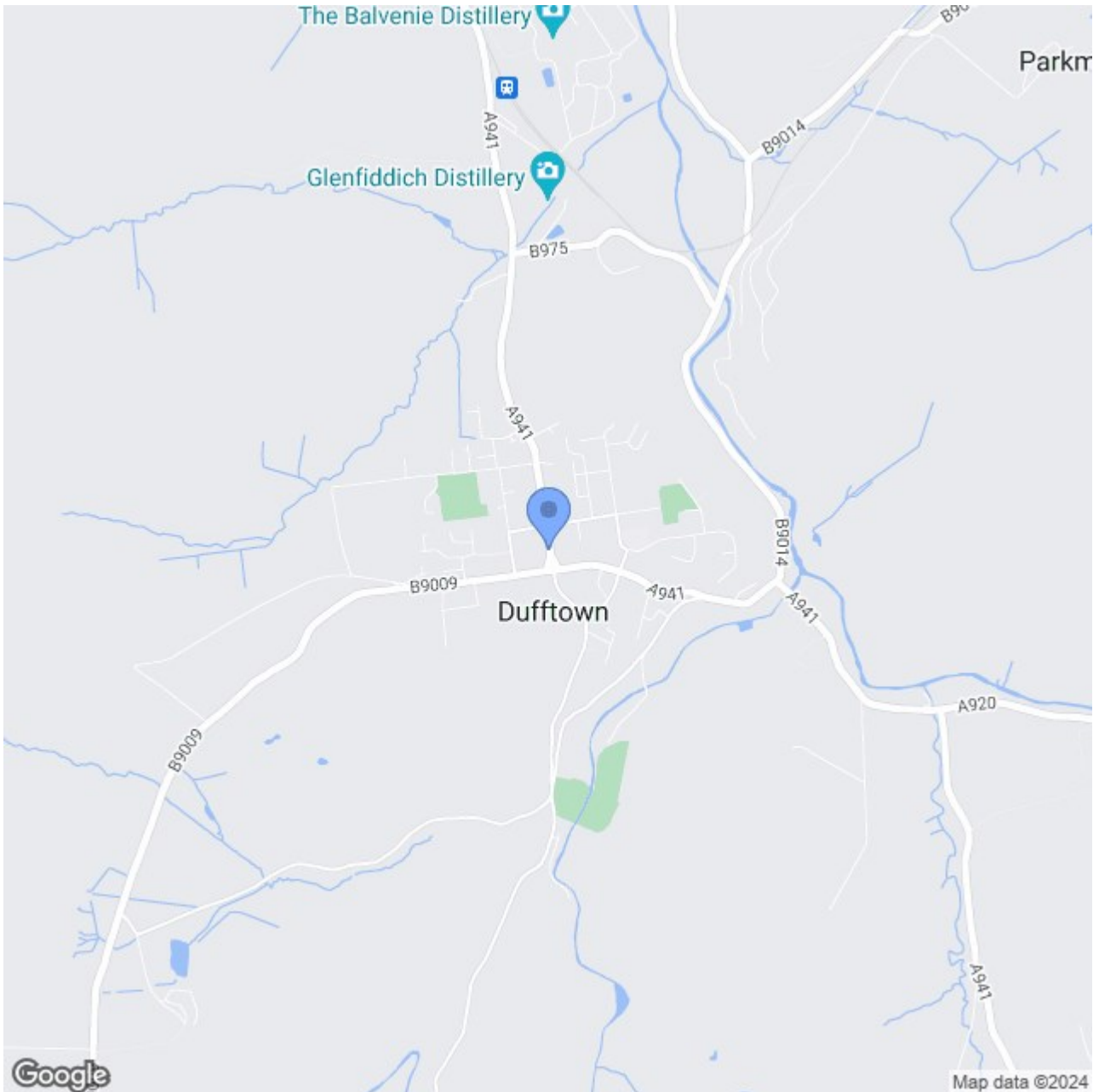
NOTES

Included in the asking price will be all carpets and fitted floor coverings, all light fittings, all shower room fittings, the built-in oven and grill; electric hob and hood in the kitchen and the pergola, arbour, garden room and wooden shed in the garden.

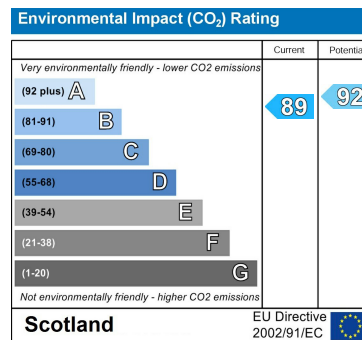
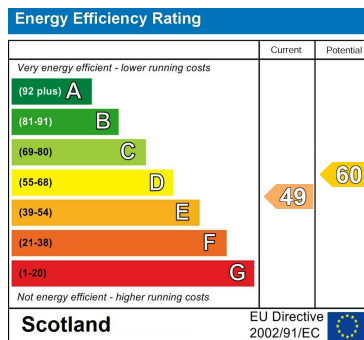
Council Tax Band: D

Viewings: Contact selling agent on 01343 555150.

Area Map



Energy Efficiency Graph



These particulars, whilst believed to be accurate are set out as a general outline only for guidance and do not constitute any part of an offer or contract. Intending purchasers should not rely on them as statements of representation of fact, but must satisfy themselves by inspection or otherwise as to their accuracy. No person in this firm's employment has the authority to make or give any representation or warranty in respect of the property.

Harper Macleod LLP, The Old Station Maisondieu Road, Elgin, Moray, IV30 1RH

Tel: 01343 555 150 Email: propertyshop.elgin@harpermacleod.co.uk <https://www.estateagencymoray.co.uk>